

Construction has been completed and a new 1.5 mile segment of the Meramec Greenway Trail is open to public use. The new trail is located in St. Louis County's Lower Meramec Park on Meramec Bottom Road near Interstate 55.

The Meramec Greenway Trail will be the main or backbone trail within the 108-mile long Meramec Greenway. The current focus is on the trail from the Mississippi River upstream to Pacific, Missouri, a distance of 50 miles by river. Approximately 15 miles of the trail is now completed, though it is in segments that are not yet connected.

The Meramec Greenway essentially encompasses the lower half of the Meramec River. Since 1975 efforts have been underway to restore and protect this outstanding natural resource. This includes the provision of recreational opportunities, with trails being the most desired component by the people.



Meramec
Greenway
Trail



The new trail will connect to an already existing segment of the Meramec Greenway Trail within Lower Meramec Park. That existing segment is accessible on Holzer Park Road at its intersection with Meramec Bottom Road. At this location is the Lower Meramec Trailhead. From this point the trail meanders downstream along the river, connecting to the newly completed trail that leads to the newly constructed I-55 Trailhead near Meramec Bottom Road and I-55. The total length of the trail from trailhead to trailhead is 2.5 miles, and it is asphalt surfaced.

Funding for this trail came from St. Louis County, \$190,000 from the Great Rivers Greenway District and a \$55,000 Federal Recreation Trails Program grant. The total cost was \$356,688. In addition, the acquisition of some lands along the trail route was completed.

Lower Meramec Park is located within the Meramec flood plain between Missouri Highway 21 and Interstate 55, and currently consists of 340 acres. It is a passive park, predominantly forested. In addition to the main trail, there is the Tall Timbers Trail, a loop that passes near a unique swamp area.

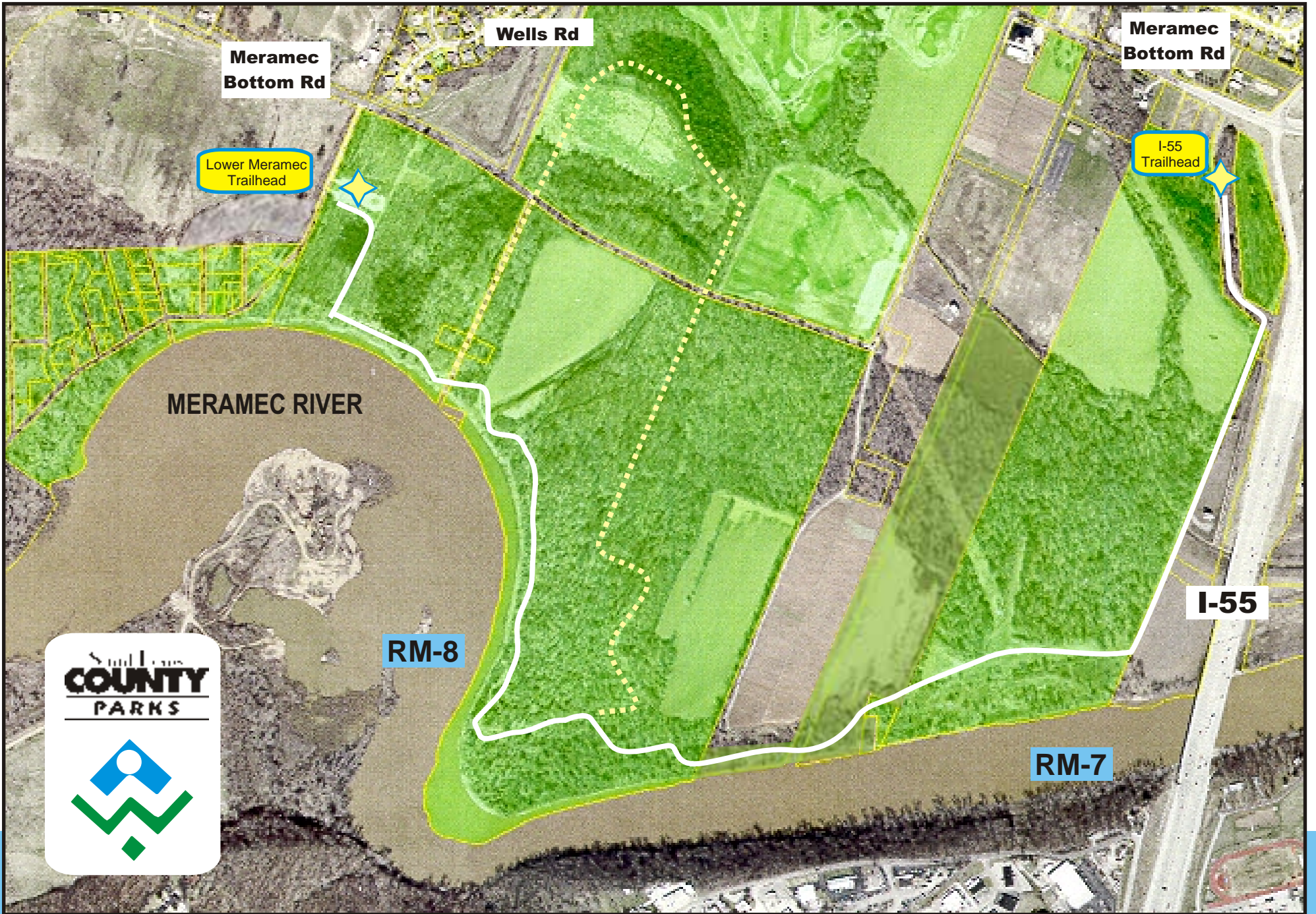
While most of the Meramec Greenway Trail passes through deep forest, it also passes through a bottomland prairie and wetland, and offers scenic views of the river.

We invite you to come check it out.

MERAMEC GREENWAY TRAIL

New Trail Section Opens

Newsletter #46 Summer 2008



Meramec Bottom Rd

Wells Rd

Meramec Bottom Rd

Lower Meramec Trailhead

I-55 Trailhead

MERAMEC RIVER

RM-8

I-55

RM-7



LOWER MERAMEC PARK
St. Louis County

Meramec Greenway Trail

Tall Timbers Trail

RM-7

River Mile

North